

Amendments to *Acorus calamus* L. (လင်းခဲ)**5.2. TLC analysis**

To macerate 1 g of powder drug add in 10 mL of dichloromethane, allow to stand for 48 hours. Filter and evaporate the solvent and redissolve the residue in 1 mL of dichloromethane for chromatography.

- Application volume : 10 μ L
- Developing solvent system : Hexane : Ethyl acetate (10 : 1)
- Stationary phase : Silica gel GF₂₅₄ Aluminium sheet
- Spray reagent : Vanillin - sulphuric acid

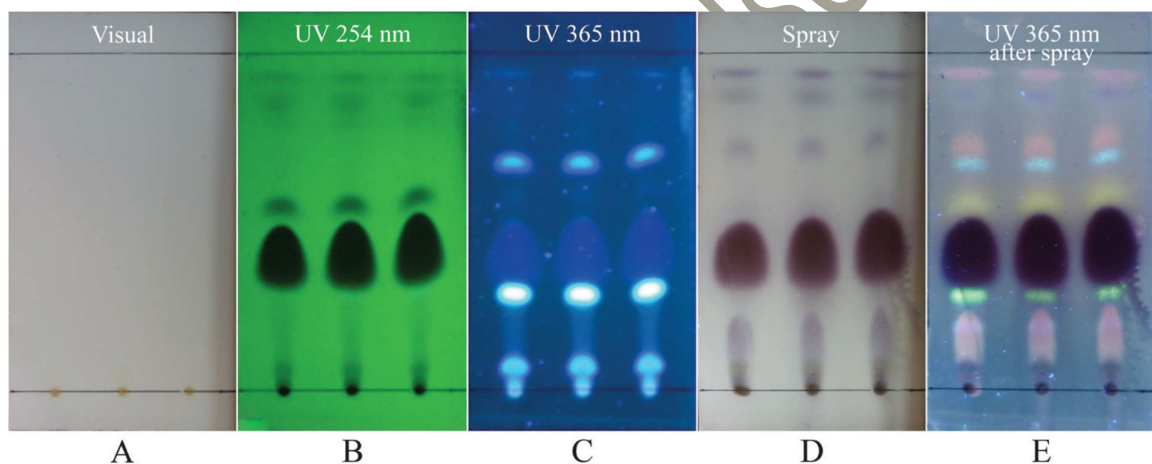


Fig.1. Thin-layer Chromatogram of Dichloromethane Extract of the Dried Rhizome of *Acorus calamus* L.

Table.1. R_f values of components in Dichloromethane Extract of the Dried
Rhizome of *Acorus calamus* L.

R _f	Visual	UV 254 nm	UV 365 nm	Spray	After spray
0.96		Pale brown	Pale blue		
0.93				Purple	Pink
0.87		Pale brown	Faint blue	Black	Purple
0.82		Pale brown			
0.77			Faint blue	Purple	
0.72					Pink
0.67			Fluorescence blue		Blue
0.60			Pale blue		
0.58		Brown			Orange
0.43		Dark brown	Blue	Violet	Deep violet
0.30			Fluorescence blue		Fluorescence yellow
0.12				Purple brown	Pink purple